

POWER

TOURING DISTRO

TOURING POWER DISTRO' RANGE

The Touring Range is constructed with self-contained UL compliant metal enclosures, which can be easily mounted into a standard 19" road case. They all feature cam lok pass thru's with phase cam covers and test points. The 225a and higher distro's have double neutrals. The power indicators are on both the front and rear, and the front indicators are also both pre and post main breaker. All amp meters are rated for line voltages up to 260v so they will not be damaged by cross phasing the line supply. The Voltmeter is wired pre main breaker, allowing the user to see the voltage before the power is switched on.



48 x 208v

- 24-100% rated 208v 20a circuits, 48 channels (8-Socapex compatible outputs).
- 225a main breaker.
- Cam lok in and thru'. With test points and power indicators.
- Double neutral.
- 19"W x 18"D x 28"H

48 x 110v

- 48-100% rated 110v 20a circuits, 48 channels (8-Socapex compatible outputs).
- 225a main breaker.
- Cam lok in and thru'. With test points and power indicators.
- Double neutral.
- 19"W x 18"D x 28"H

24 x 208v

- 12-100% rated 208v 20a circuits, 24 channels (4-Socapex compatible outputs).
- 100a main breaker.
- Cam lok in and thru'. With test points and power indicators.
- 19"W x 18"D x 14"H

24 x 110v

- 24-100% rated 110v 20a circuits, 24 channel (4-Socapex compatible outputs).
- 100a main breaker.
- Cam lok in and thru'. With test points and power indicators.
- 19"W x 18"D x 14"H

STD OPTIONS FOR THE 48 CHANNEL MODELS

Utility output. 30a 3Ø.

- 1-6 circuit 19 pin Socapex compatible 110v 20a.
- 1-L21-30 30a 3Ø 5-wire twist.
- 3-20a 110v Edison duplex.

Utility output. 50a 3Ø

- 1-6 circuit 19 pin Socapex compatible 110v 20a.
- 1-Hubble CS range 125/250v, or 3Ø 255v 50a.
- 3-20a 110v Edison duplex.

Meters

- 3-digital panel Amp meters.
- 1-digital panel Volt meters.

Quantum Energy Devices, P.O. Box 1793, L.I.C., NY 11101

Phone: 1718.786.4503 Fax: 1718.786.4504

Web: www.qedinc.tv Email: info@qedinc.tv

Specification subject to change without notice

QUANTUM
ENERGY
DEVICES INC.

STUDIO DISTRO

STUDIO RANGE

The Studio Range is designed to allow the user to daisy chain multiple distro's of different output types together in a 225a 3Ø power scheme. The range features double neutral pass thru's, and cam lok covers over the phase outputs. As well as power indicators on both the inputs and outputs and a ground/neutral fault indicator.

The Studio Range products are floor standing and are finished with a rugged epoxy powder coating. The ends have a visible orange finish, and the sides are black allowing the units to be discreetly used around the set or studio without becoming a hazard. A heavy-duty handle is also provided.

208 v 19 pin pass thru'

- 12-100% rated 208v 20a circuits, 24 channels (4-Socapex compatible outputs).
- 1 20a Edison duplex.

208 v L6-20 pass thru'

- 6-100% rated 208v 20a circuits, 12 channels (12-L6-20 twist outputs).

110 v 19 pin pass thru'

- 24-100% rated 110v 20a circuits, 24 channels (4-Socapex compatible outputs).
- 1-20a Edison duplex.

600a pass thru'

- 6-100% rated 110v 100a circuits, 6 channels (6-110a pin outputs).
- 1-20a Edison duplex.

Hubble pass thru'

- 4-100% rated 125/250v, or 3Ø 255v 50a circuits, 4 channels (4-Hubble CS range twist outputs).

Twist pass thru'

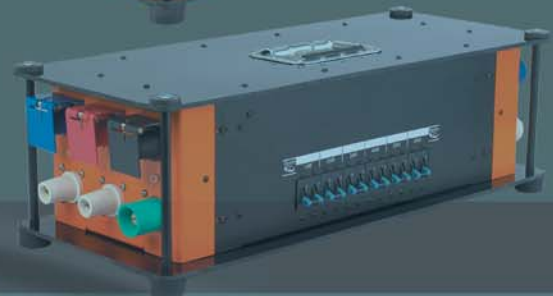
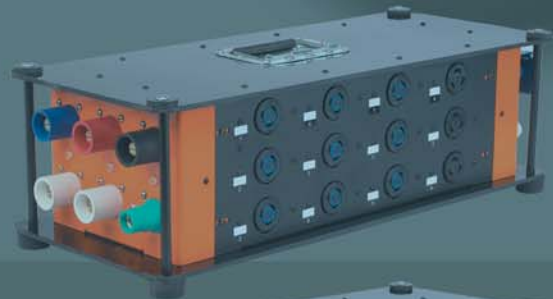
- 4-100% rated 120/220v 30a circuits, 4 channels (4-L21-30 5 wire 30a twist outputs).

225a switched pass thru'

- 225a 3Ø breaker switch.

100a switched pass thru'

- 100a 3Ø breaker switch.



All of QED's products are built to the highest construction standards. The internal wiring is loomed and labeled to allow ease of maintenance and inspection. Only high quality components are used throughout. The format, design and layouts are based on years of touring and show experience, taking into account space and power demands. The construction and finish are designed to protect your investment during years of use in the demanding field of portable power distribution.

All QED distro's have the following features in common.

1. Built to conform to or exceed NEC, and UL 1640 portable power distribution standards.
2. All branch current breakers are Airpax LEL magnetic T2 range. These breakers are 100% duty cycle rated at their specified current rating.
3. All internal wiring is 125 deg C rated.
4. All products are finished with a durable epoxy powder coating.
5. Power indicator on both the inputs and outputs.
6. Cam lok covers on the phase outputs.



MOTOR

TOURING DISTRO

32 CHANNEL 3Ø

- 16-100% rated 20a 3Ø circuits, 32 channels outputs.
- 100a main breaker.
- Cam lok in and thru'. With test points and power indicators.
- 2-Military Spec' signal connector
- 19"W x 18"D x 28"H

16 CHANNEL 3Ø

- 8-100% rated 20a 3Ø circuits, 16 channels outputs.
- 100a main breaker.
- Cam lok in and thru'. With test points and power indicators.
- 1-Military Spec' signal connector
- 19"W x 18"D x 14"H

8 CHANNEL 3Ø PASS THRU'

- 4-100% rated 20a 3Ø circuits, 8 channels outputs.
- Cam lok in and thru'. With test points and power indicators.
- 1-Military Spec' signal connector
- 26"W x 11"D x 8"H

24 CHANNEL 1Ø

- 24-100% rated 20a circuits, 24 channels outputs.
- 100a main breaker.
- Cam lok in and thru'. With test points and power indicators.
- 2-Military Spec' signal connector
- 19"W x 18"D x 28"H

12 CHANNEL 1Ø

- 12-100% rated 20a, 12 channels outputs.
- 100a main breaker.
- Cam lok in and thru'. With test points and power indicators.
- 1-Military Spec' signal connector
- 19"W x 18"D x 14"H

STD OPTIONS

- 7 pin Socopax outputs.
- 7 pin Veam compatible outputs.
- 19 pin Socopax compatible outputs.
- Double Hubble outputs.



MOTOR DISTRO RANGE

The Touring Range is all constructed with self-contained UL complaint metal enclosures, which can be easily mounted into a standard 19" road case. They all feature cam lok pass thru's with phase cam covers and test points. The 225a and higher distro's have double neutrals. The power indicators are on both the front and rear, and the front indicators are also both pre and post breaker. All amp meters are rated for line voltages up to 260v so they will not be damaged by cross phasing the line supply. The Voltmeter is wired pre breaker, allowing the user to see the voltage before the main breaker is switched on.

The large format motor controller has a double safety feature. A low voltage "GO" relay only allows power to the control circuits when the "GO" button is press on the remote handset. In parallel with this is a high current contactor, which only allows power to the motors themselves when the "GO" button is pressed. When the "GO" button is released all power is removed from both the control relays and motors. The whole motor system is de energized when the "GO" is released, no chance of a free running motor. The smaller 8-way controllers feature the low voltage relay.

Quantum Energy Devices, P.O. Box 1793, L.I.C., NY 11101

Phone: 1718.786.4503 Fax: 1718.786.4504

Web: www.qedinc.tv Email: info@qedinc.tv

Specification subject to change without notice

QUANTUM
ENERGY
DEVICES INC.

MOTOR REMOTES

MOTOR CONTROL REMOTES

The motor control remotes feature simple basic control circuitry, with quality components. Housed in a highly visible rugged case. They feature military standard 1/4 turn contactors. Both the 8 way and 16 way use a single 16 channel connector, and the 32 way uses two 16 channel connectors, allowing the remotes to be interchangeable between the distro's.

- Pelican heavy-duty case, with protective lid.
- Military spec' signal connectors.
- Hi brightness LED channel indicators.
- C&K switches.

STD MODELS

- 32-channel
- 16-channel
- 8-channel handgrip.



All of QED's products are built to the highest construction standards. The internal wiring is loomed and labeled to allow ease of maintenance and inspection. Only high quality components are used throughout. The format, design and layouts are based on years of touring and show experience, taking into account space and power demands. The construction and finish are designed to protect your investment during years of use in the demanding field of portable power distribution.

All QED distro's have the following features in common.

1. Built to conform to or exceed NEC, and UL 1640 portable power distribution standards.
2. All branch current breakers are Airpax LEL magnetic T2 range. These breakers are 100% duty cycle rated at their specified current rating.
3. All internal wiring is 125 deg C rated.
4. All products are finished with a durable epoxy powder coating.
5. Power indicator on both the inputs and outputs.
6. Cam lok covers on the phase outputs.



Quantum Energy Devices, P.O. Box 1793, L.I.C., NY 11101
Phone: 1718.786.4503 Fax: 1718.786.4504
Web: www.qedinc.tv Email: info@qedinc.tv
Specification subject to change without notice

QUANTUM
ENERGY
DEVICES INC.

ENGINEERING SERVICES

ENGINEERING SERVICES

As QED has strived to design and manufacture high quality listed power distribution and control for both the portable and installation markets, an experienced engineering staff has been assembled. Coming from both the pure engineering and theatrical fields, QED has a wealth of experience and a depth of knowledge not found in many companies. We are now in the position to offer this resource to our customers.

- **You have an equipment list for your studio installation, but you're not sure if everything you need has been included?**

The staff at QED has years of experience in evaluating equipment lists and filling in the blanks.

- **You want turn your equipment list and lighting plot into a real specification drawing?**

QED has the tools and expertise to produce high quality engineering drawings.

- **You want to turn your specification drawing into a full installation drawing set, calling out both mechanical and electrical requirements for use by architects and contractors?**

The staff at QED has provided this service for years at other well-known systems groups, from TV studio's and theatres to theme parks. Our expertise is at your service.

- **You have been given the job of installing a lighting or rigging system in a corporate studio, a church, a high school, or college, but you don't have a theatrical engineering department in your back pocket!**

QED can be your own engineering department, helping you through the project from soup to nuts.

QED can also provide product development services such as; Circuit board design and manufacture, Software development and product production to ETL standards.

QED can also provide custom engraving and routing services, using our state of the art CNC engraver / router system.

QED's staff has a range of qualifications including BSc and BSc (Hons) in Engineering, Electrical Engineering, and Applied Physics. All have been working in the theatrical, TV and Touring industry at a practical level for many years. We are happy to offer our expertise and experience as a service to our customers.



QED is proud to be ETL listed and conform to
standard UL 1640
standard UL 508A

CUSTOM PRODUCTS

CUSTOM PRODUCTS OVERVIEW

QED is able to provide custom designed and built power distribution and control for your specific needs. All units are both mechanically and electrically engineered to provide a practical and cost effective solution to the customers requirements. This is far beyond just throwing a collection of panels into a road case. Both mechanical and electrical drawings are produced for customer approval, for each custom project. As with all QED products, the custom units are built with the same high quality components and workmanship, which has made QED's reputation for quality and reliability. And of course all work is ETL listed to conform to either UL508A or UL1640.

Below are examples of the custom designs we have produced.

CUSTOM POWER DISTRIBUTION FOR INSTALLATIONS

The design called for 12-20amp 110v, and 4-3 phase 30amp circuit distribution for a fixed installation. The unit was designed to make the installation practical within a very tight area. It features a swing out wall enclosure to allow access to the main power terminations. The unit is also 100% rated and ETL listed.



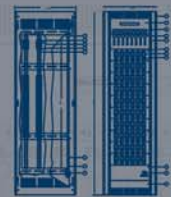
CUSTOM PATCHING AND WIRING SYSTEMS FOR INSTALLATIONS

The customer required a patching and wiring system that would allow them to use rental dimmers within their fixed installation studio. The system provides wiring termination for the studio's automated hoist system; plus allowing a compact yet accessible 2.4 kW patch. The unit was built using a swing out wall-mounted enclosure allowing ease of installation. Again the system is ETL listed.



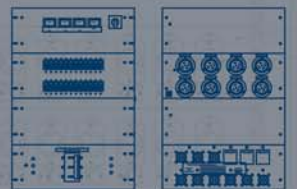
CUSTOM MOTOR CONTROL SYSTEMS FOR INSTALLATION

QED has provided various configurations of motor control systems that include: both power and control, just control distribution, and motor patching systems as in this example. Grid mount outlet boxes are also provided using the customer's specified connectors. Custom control remote stations are built to the customer's specifications. All the internal wiring is labeled clearly and terminated neatly, to allow ease of installation. Again all systems are ETL listed.



CUSTOM PORTABLE POWER DISTRIBUTION AND CONTROL

If our standard portable products don't fulfill your requirements, we can build to your specifications. As with our standard products all units are built to be rugged and reliable, as well as taking into account both truck packs and electrical services provided within a venue. In this example the specification called for a 100% rated and 100% duty cycle system with power monitoring. No problem, that's what we do and of course it's ETL listed.



QED is proud to be ETL listed and conform to
standard UL 1640
standard UL 508A

SMALL MOTOR REMOTES

iQ Series

iQ Series and Motor Control and Cable Tester

The iQ Series provides simple and cost effective 3Ø or 1Ø hoist control. The ETL listed MC 4-way Hoist Controller includes both control and power distribution in a complete system, with no external accessories required. Housed within a rugged Pelican case, with a lid to protect the controls, the MC 4-Way Hoist Controller is a perfect package for small motor rentals.

The MC 4-way includes the following features:

- ETL listed to conform to UL 508A
- NEMA 1 metal enclosure, within a rugged Pelican case.
- Large rugged toggle switches
- Bright neon indicators
- Individual selection of 4 motors. Up, down and off.
- Group control off all 4 motors, via a momentary "GO" switch and power contactor.
- On, off, and Phase Reverse switch
- Power and phase rotation, with a "real" phase reversing contactor
- Mains power protection via a 100% rated 20A 3Ø branch breaker. (3Ø version.)
- L21-20 twist mains input connector, as standard. (3Ø version.)
- 7 pin SOC, 7 pin ¼ turn Veam standard output connectors
- Double Hubble output optional



STANDARD MODELS

- MC 4-Way 3Ø Hoist Controller. 7-pin Soc, 7-pin ¼ turn Veam, Double Hubble
- MC 4-Way 1Ø Hoist Controller. Double Hubble

Motor Control and Cable Tester

The Motor Control and Cable Tester is a compact, rugged and cost effective tool for any motor application. The Motor Control and Cable tester is used to test the presence of each leg of 3 power, correct phase rotation, direction control and signal verification. The tester includes the following features:

- Neon X,Y and Z phase indicators
- Neon CW and CCW rotation indicators
- Neon Up and Down indicators
- Internally fused



QED are proud to be ETL listed and conform to
standard UL 1640
standard UL 508A



All of QED's products are built to the highest construction standards. The internal wiring is loomed and labeled for ease of maintenance and inspection. Only high quality components are used throughout. The format, design and layouts are based on professional touring experience, taking into account space and power demands. The construction and finish are designed to protect your investment for years to come.

All QED products have the following features in common.

1. Built to conform to or exceed UL and NEC standards.
2. All internal wiring is 125C rated.
3. All products are finished with durable epoxy powder coating.
4. All products are clearly labeled using engraved Lexan.
5. Power indicators provided clearly show the system status.